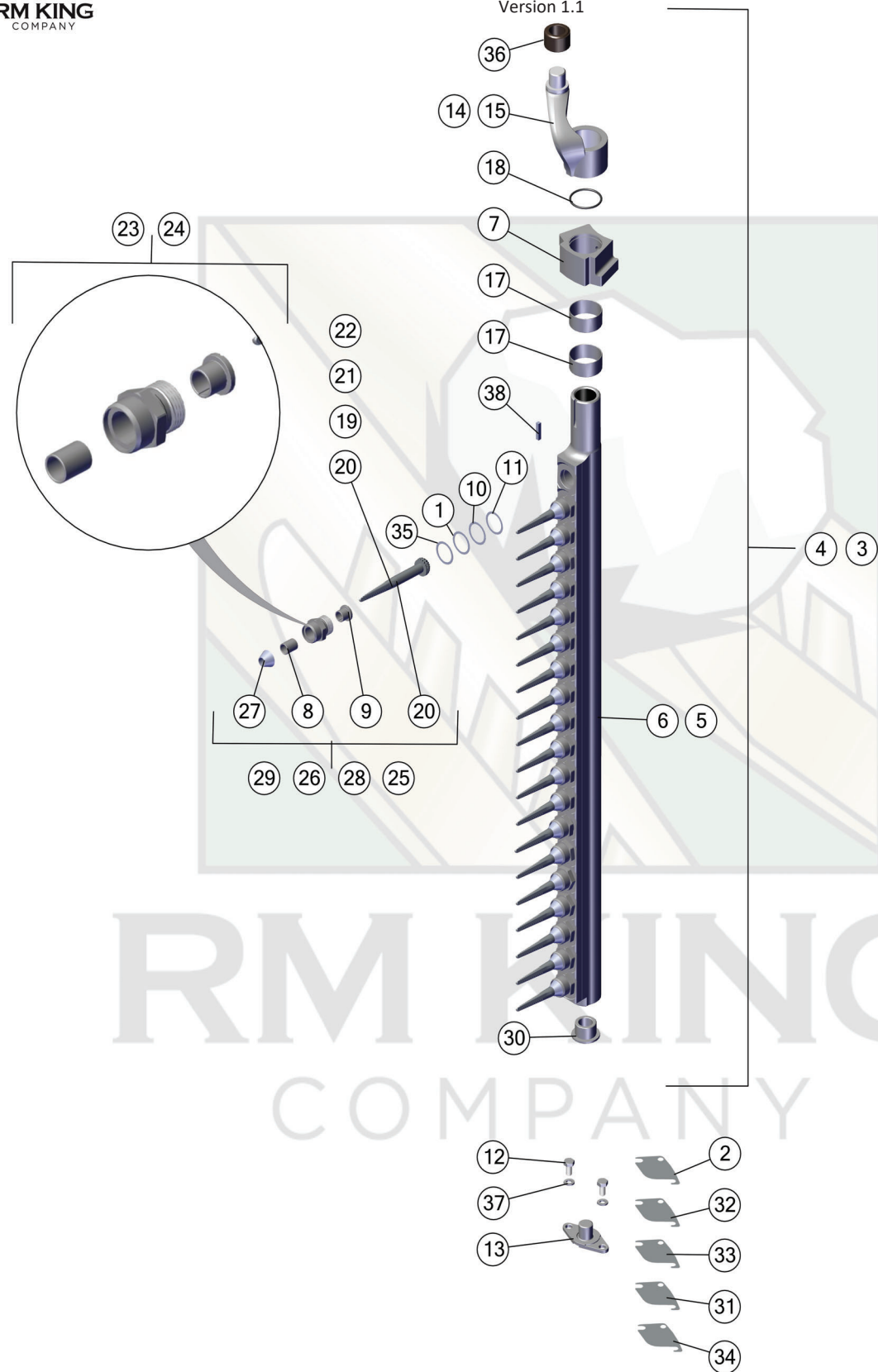




PICKER BAR AND SPINDLES

MODELS 2022-635

Version 1.1



EMAIL: INFO@RMKING.COM
TEL: 559.266.0258



PICKER BAR AND SPINDLES

MODELS 2022 - 635

Version 1.1

ID	Part Number	Description	Model	MFG
1	11264R	Shim .2mm	2022-635	RMK
2	1338189C1	Shim .002in	2022-635	OEM
3	1982390C2	Cpt. Bar L.H.	2022-635	RMK
4	1982391C2	Cpt. Bar R.H.	2022-635	RMK
5	1982392C1	Bar L.H.	2022-635	RMK
6	1982393C1	Bar R.H.	2022-635	RMK
7	1982394C2	Bearing	2022-635	RMK
8	1994863C1	Bushing - Plain	2022-635	RMK
9	1994864C1	Bushing - Flanged	2022-635	RMK
10	1994989C1	Shim .15mm	2022-635	RMK
11	202099C1	Shim .1mm	2022-635	RMK
12	20677	Bolt - 5/16 x 5/8	2022-635	RMK
13	214910C2	Bar Pivot	2022-635	RMK
14	216504C3	Cam Arm L.H.	2022-635	RMK
15	216505C3	Cam Arm R.H.	2022-635	RMK
17	223634C1	Sleeve	2022-635	RMK
18	238-6132	O-ring	2022-635	RMK
19	346039A1	Spindle L.H.	2022-635	RMK
20	346040A1	Spindle R.H.	2022-635	RMK

ID	Part Number	Description	Model	MFG
21	346041A1	Spindle L.H.	2022-635	RMK
22	346042A1	Spindle R.H.	2022-635	RMK
23	364767A	Spindle Nut L.H.	2022-635	RMK
24	364767A	Spindle Nut R.H.	2022-635	RMK
25	364347A1	Spindle Assy. L.H.	2022-635	RMK
26	364348A1	Spindle Assy. R.H.	2022-635	RMK
27	364607A1	Shield	2022-635	RMK
28	364882A1	Spindle Assy. L.H.	2022-635	RMK
29	364883A1	Spindle Assy. R.H.	2022-635	RMK
30	669815R3	Bar Bushing	2022-635	RMK
31	669817R1	Shim .003in	2022-635	RMK
32	669818R1	Shim .005in	2022-635	RMK
33	669819R1	Shim .007in	2022-635	RMK
34	669817R1	Shim .010in	2022-635	RMK
35	674980R2	Shim .3mm	2022-635	RMK
36	86948C1	Cam Roller	2022-635	RMK
37	92-11031	Lock Washer - 5/16	2022-635	RMK
38	Q5024	Key	2022-635	OEM

NOTES:

12. 20677 REPLACES 14-510

EMAIL: INFO@RMKING.COM
TEL: 559.266.0258